

ROCKHARD

Protective Liner Against Severe Wear & Abrasion

Rockhard is a composite product combined of extremely high strength wear resistant densely embedded grains in a strong cementing matrix providing superior protection against moderate to severe wear.

Rockhard can perform its best as a wear resistant lining against severe abrasion up to 1200°C temperature.

Rockhard products are trowelled onto an anchoring mesh in the form of monolithic layers.

Rockhard precast slab can be supplied for easy installation at site. Steel pipes with **Rockhard** lining inside can be used for carrying high velocity dust laden gas or Solids.

Applications :-

Area wise:-

Pipes and bends for pneumatic conveying of material.

Dust extraction system.

Cyclones.

Separator for coal dust.

Raw mill & clinker mill body.

Static & dynamic separator.

V type separators.

Dedusting cyclones.

Clinker cooler duct.

Bottom ash hopper.

Industry Wise :-

Power Plant, Cement Plant, Steel Plant, Paper Mill etc.

Unique Properties Of Rockhard:-

Highly resistant to erosive and abrasive wear.

Ability to apply in-situ.

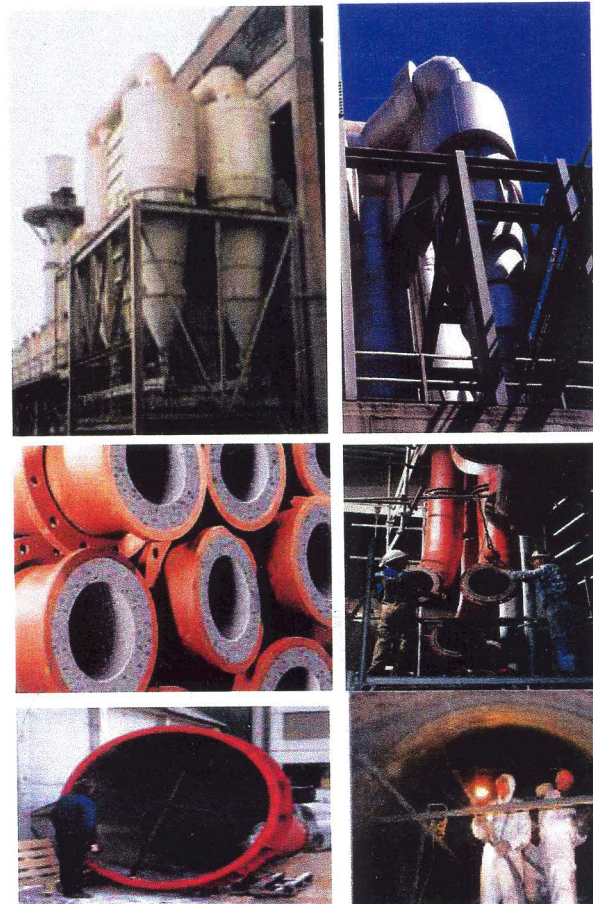
Ability to apply and form to any shape.

Monolithic and highly compact structure.

Fast and easy installation including overhead applications.

Variable thickness from 15 to 50 MM.

Lining can be put into use after 2-3 days.

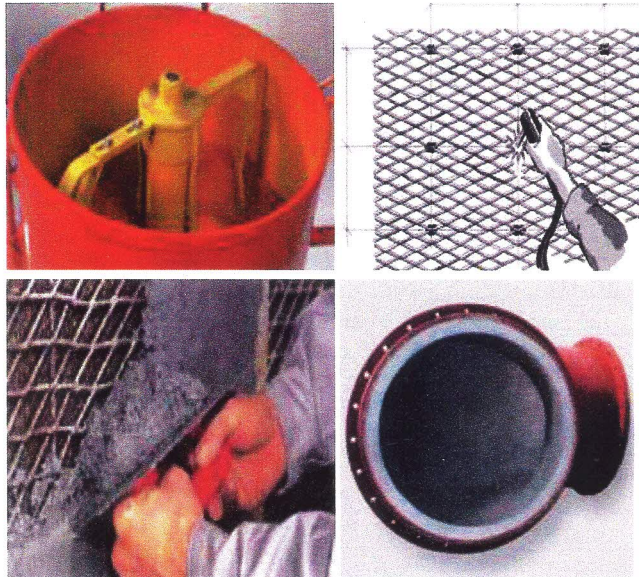


Application Procedure:-

Rockhard can be trowelled directly on to an anchoring mesh typically in thickness of 15 to 50MM.

Clean the steel / RCC surface for dirt, grease and oil by wire mesh. Retainers should be provided at an interval of 1000MM on vertical and inclined surface. Weld anchors or bars equi-spaced in the area to be lined.

Weld the wire mesh on these anchors or bars. Mix dry compound with steel fibers. Add recommended quantity of water and binder. Mix it in pan mixer to form dough. Trowel the dough on the wire mesh.



Rockhard Lined Pipe

Monolithic layer of Rockhard can be applied inside the pipes by special process

Manufacturing of Rockhard lined Pipes

Mounting the pipe on a specially designed machine.

Preparation of **Rockhard** mix.

Application of Rockhard inside the pipe.

Curing the **Rockhard** lined pipe.

Packing & dispatch the pipes.

Advantages:-

It gives uniform thickness.

Length of pipe up to three meter can be lined with **Rockhard**.



Technical Specifications

SN	Product			
	Properties	Rockhard LT	Rockhard MT	Rockhard HT
1	Service Temp.	400° C	800° C	1200° C
2	Density (gm/cc)	2.5 to 2.6	2.6	2.8
3	CCS (kg/cm ²)			
	/20° C	1200	1200	1400
	/800° C	--	900	900
	/1200° C	--	--	1000
4	Hardness (Moh Scale)	8	8	8
5	Flexural Strength at 20°C	120	130	150

